

PREEMIE CROSSED FRONT UNDERSHIRT



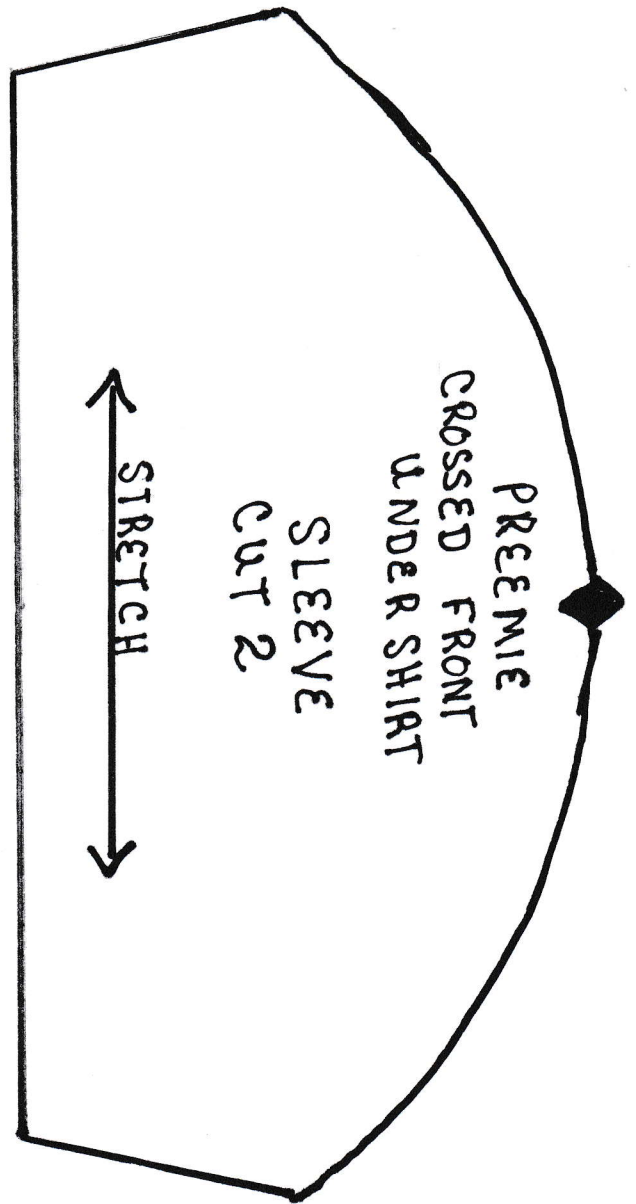
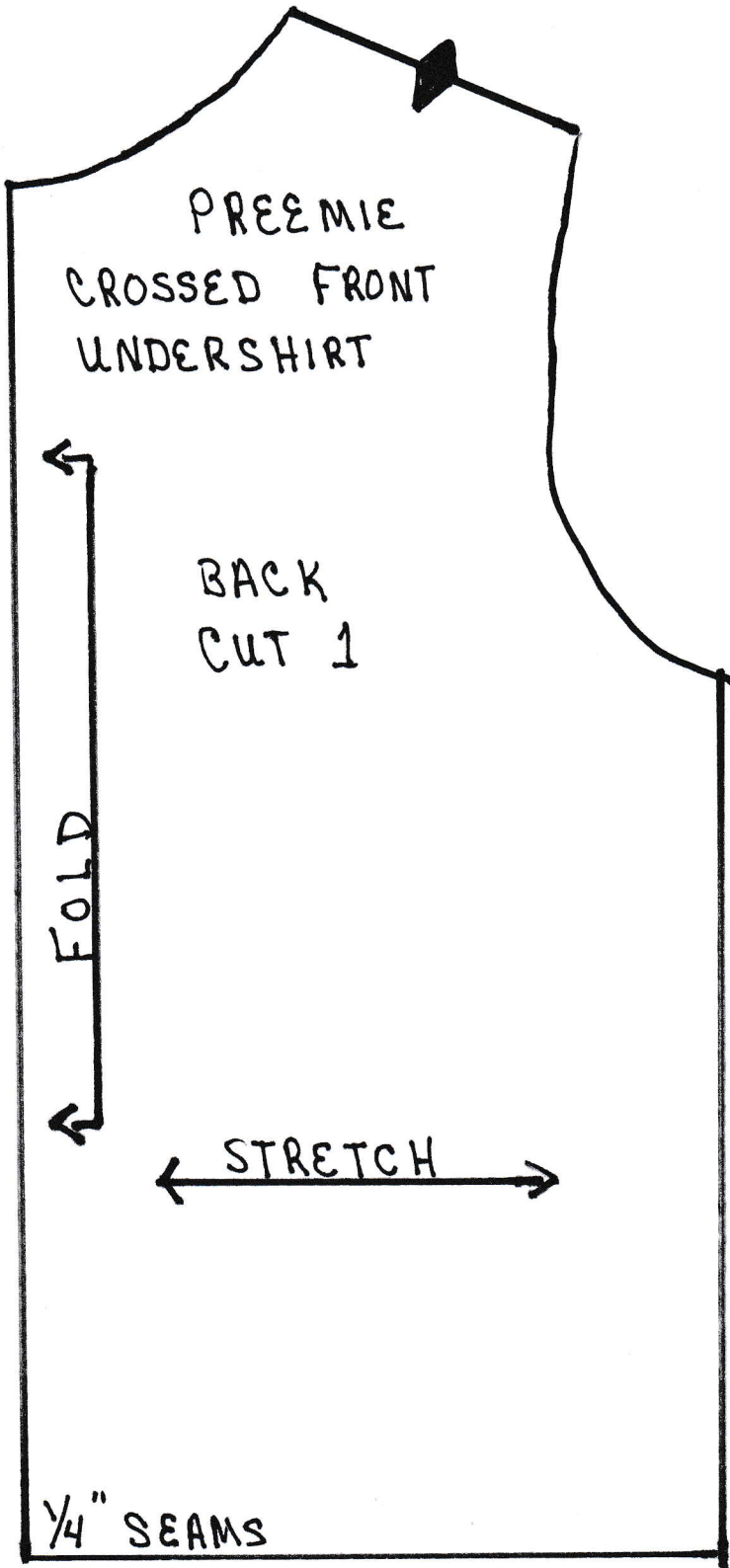
Supplies:

Cotton knit fabric
Thread

Directions:

Use 1/4" seam allowance

1. Cut out the pattern pieces as directed on pattern
2. Serge the hem of the sleeves
3. Serge shoulder seams using 1/4" seam allowance.
4. Sew sleeves to the front and back matching the notch at the shoulder seam.
5. Serge the front and neck edge of the shirt
6. Cross the front pieces.
7. Serge the side seams through the sleeve.
8. Serge the bottom of the shirt.



1/4" Seams

PREEMIE
CROSSED FRONT
UNDERSHIRT

FRONT
CUT 2

